

**The BMW 3 Series
saloon**

316i
318i
320i
325i
330i
318d
320d
330d



Passion comes in many different forms.
But few are more exciting.



Real engines, for real
driving pleasure.



There's one thing we know you won't like about your BMW 3 Series saloon. And that's that at some point you'll have to get out.



A cockpit shouldn't be governed by fashion,
but by the needs of the driver.





□ **Sequential Manual Gearbox (SMG):** 'Paddles' on the steering wheel enable comfortable, precise gear-changing within 150 milliseconds – providing a sportier drive, just like in Formula 1 (available on 325i and 330i).



□ **Multifunction buttons for steering wheel:** Allowing you easy and rapid access to cruise control, radio and telephone – without taking your hands off the steering wheel.



□ **Navigation system:** The navigation system with its 16 : 9 (6.5") monitor does not just guide you quickly and accurately to your destination via its display arrows or map overviews. Now you can even view two applications at the same time. The split-screen function means you can operate the navigation system and the radio, for example, in tandem.



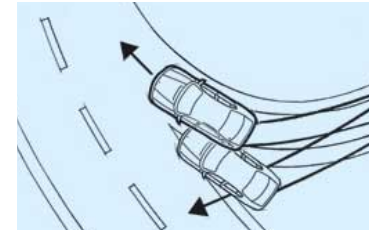
□ **BMW light-alloy wheels** double-spoke styling 68M with mixed tyres, 7.5 J x 17-inch, 225/45 R 17 tyres at front, 8.5 J x 17-inch, 245/40 R 17 tyres at rear.



□ **BMW light-alloy wheels** star-spoke styling 44, 8 J x 17-inch, 225/45 R 17 tyres.



□ **BMW light-alloy wheels** V-spoke styling 72M with mixed tyres, 8 J x 18-inch, 225/40 R 18 tyres at front, 8.5 J x 18-inch, 255/35 R 18 tyres at rear.



□ **Dynamic Stability Control (DSC):** An intelligent chassis and suspension control system for optimum driving pleasure, especially in curves. It recognises the risk of swerving from the start and keeps the vehicle safely on course.



□ **M sports package II:** An equipment package that provides almost infinite scope to meet the visual and technological needs for you to enhance the sporting appearance of your BMW 3 Series saloon. Includes among other things a special front air dam and rear apron, light-alloy double-spoke 68M wheels, sports seats with Alcantara cloth cover, Alu Black Cube interior trim and the M leather steering wheel.



□ **The ski bag** allows clean and safe transportation of up to four pairs of skis with up to four people on board. If the ski bag is not required, it can be hidden away behind the centre armrest to save space.



□ **Complete preparation for mobile phone:** The optional BMW mobile (Motorola V50) connects to the hands-free system enabling you to make calls without taking your hands off the wheel. (Includes multifunction buttons for steering wheel and BMW Reverse radio.)

Safety	316i	318i	320i	325i	330i	318d	320d	330d
Airbags:								
- Driver and front passenger ID airbags (Impact-Dependent Airbag System), seat occupation detector for front passenger airbag	■	■	■	■	■	■	■	■
- ITS head airbags at the front for driver and front passenger	■	■	■	■	■	■	■	■
- Side airbags at the front for driver and front passenger	■	■	■	■	■	■	■	■
- Side airbags for rear-seat passengers	□	□	□	□	□	□	□	□
Alarm system with radio remote control	□	□	□	□	□	□	□	□
Anti-lock Brake System (ABS)	■	■	■	■	■	■	■	■
Bi-xenon headlights , incl dynamic headlight range control	□	□	□	□	□	□	□	□
Brakes:								
- Disc brakes, front, inner-vented	■	■	■	■	■	■	■	■
- Disc brakes, rear	■	■	-	-	-	■	-	-
- Disc brakes, rear, inner-vented	-	-	■	■	■	-	■	■
Brake light , third	■	■	■	■	■	■	■	■
Centre lock switch	■	■	■	■	■	■	■	■
Central locking with electronic immobiliser, crash sensor, fuel tank filler flap integrated in central locking	■	■	■	■	■	■	■	■
Child seat fastening ISOFIX	■	■	■	■	■	■	■	■
Cornering Brake Control (CBC)	■	■	■	■	■	■	■	■
Dynamic Stability Control (DSC) incl traction mode and DBC	□	□	□	□	□	□	□	□
Foglamps	□	□	■	■	■	□	□	■
Headlight washing system	□	□	□	□	□	□	□	□
Park Distance Control (PDC) at the rear	□	□	□	□	□	□	□	□
Parking protection provided by wrap-around plastic bumpers and side strips	■	■	■	■	■	■	■	■
Power steering with crash-optimised safety steering column	■	■	■	■	■	■	■	■
Rain sensor incl automatic headlight control	□	□	□	□	□	□	□	□
Safety battery terminal	-	-	■	■	■	■	■	■
Safety bodyshell:								
- Deformation zones at front and rear, aluminium door reinforcement, bumpers regenerating to their original shape at up to 4 km/h	■	■	■	■	■	■	■	■
Seatbelts:								
- Inertia-reel seatbelts at the front with pyrotechnic belt latch tensioner, belt force limiter and belt restrainer	■	■	■	■	■	■	■	■
- Three-point seatbelt for third rear passenger, incl third headrest	□	□	□	□	□	□	□	□
- Ergonomic belt system at the rear	■	■	■	■	■	■	■	■
- Manual seatbelt height adjustment on the B-pillar	■	■	■	■	■	■	■	■
Side impact protection , integrated, with roof crossmember	■	■	■	■	■	■	■	■
Tyre Pressure Control (TPC)	□	□	□	□	□	□	□	□

Engine	316i	318i	320i	325i	330i	318d	320d	330d
4-cylinder in-line diesel engine , turbocharged, with variable turbine geometry	-	-	-	-	-	■	-	-
4-cylinder in-line diesel engine with common-rail technology	-	-	-	-	-	-	■	-
4-cylinder in-line engine with 4-valve technology	■	■	-	-	-	-	-	-
6-cylinder in-line diesel engine with common-rail technology	-	-	-	-	-	-	-	■
6-cylinder in-line engine with 4-valve technology	-	-	■	■	■	-	-	-
Balance shafts	■	■	-	-	-	-	■	-
Cylinder-specific knock control	■	■	■	■	■	-	-	-
Digital Diesel Electronics (DDE)	-	-	-	-	-	■	■	■
Digital Motor Electronics (DME)	■	■	■	■	■	-	-	-
Distributor , solid-state	■	■	■	■	■	-	-	-
Double-VANOS	■	■	■	■	■	-	-	-
Emissions standard , EU3	-	-	-	-	-	■	■	■
Emissions standard , EU3/D4	-	-	■	■	■	-	-	-
Emissions standard , EU4	■	■	-	-	-	-	-	-
Individual Control Intake Manifold (ICIM)	■	■	-	-	-	-	-	-
Light-alloy cylinder head	■	■	■	■	■	■	■	■
On-board diagnosis	■	■	■	■	■	■	■	■
Oxidizing convertor	-	-	-	-	-	■	■	■
Three-way catalytic converter , heated oxygen sensor, activated carbon filter, controlled tank purge	■	■	■	■	■	-	-	-
Valve play compensation , hydraulic	■	■	■	■	■	■	■	■
VALVETRONIC	■	■	-	-	-	-	-	-
Transmission/suspension	316i	318i	320i	325i	330i	318d	320d	330d
5-speed manual gearbox	■	■	■	■	■	■	■	■
All-wheel-drive system	-	-	-	□	□	-	-	□
Anti-roll bars front and rear	■	■	■	■	■	■	■	■
Automatic transmission:								
- 5-speed EH automatic transmission with Shiftlock/Interlock and adaptive transmission management, Steptronic	□	□	□	□	□	-	□	□
Central arm rear axle with anti-squat and anti-dive	■	■	■	■	■	■	■	■
Dual-mass flywheel (manual gearbox models only)	■	■	■	■	■	■	■	■
Sequential Manual Gearbox (SMG)	-	-	-	□	□	-	-	-
Single-joint spring strut front axle with anti-dive	■	■	■	■	■	■	■	■
Sports suspension	□	□	□	□	□	□	□	□

Interior features	316i	318i	320i	325i	330i	318d	320d	330d
Air conditioning (incl microfilter)	■	■	■	■	■	■	■	■
Analogue-face instruments with illumination from behind	■	■	■	■	■	■	■	■
Armrest at the front	□	□	□	□	■	□	□	■
Armrest at the front, not present	–	–	–	–	□	–	–	□
Armrests on the doors with integrated door closing handles	■	■	■	■	■	■	■	■
Automatic air conditioning (incl AAR and solar sensor)	□	□	□	□	□	□	□	□
Car/key memory	■	■	■	■	■	■	■	■
Car telephone, D-Netz/GSM 900, cordless, incl group aerial	□	□	□	□	□	□	□	□
Centre armrest at the rear	□ ¹	□ ¹	■	■	■	□ ¹	□ ¹	■
Check/Control	■	■	■	■	■	■	■	■
Climate comfort windscreen	□	□	□	□	□	□	□	□
Comfort Package: armrest at the front, on-board computer, foot mats in velours, interior mirror with automatic anti-dazzle function, automatic air conditioning, leather steering wheel, PDC, Reverse radio (for 4-cylinders), Business radio (for 6-cylinders)	□	□	□	□	□	□	□	□
Compact spare wheel in luggage compartment beneath floor	■	■	■	■	■	■	■	■
Complete preparation for mobile phone (Motorola V50)	□	□	□	□	□	□	□	□
Courtesy lights	■	■	■	■	■	■	■	■
Courtesy lights with automatic function and soft on/off dimming	■	■	■	■	■	■	■	■
Courtesy lights package with footwell illumination at the front, switchable reading lights at the front and illuminated vanity mirrors	–	–	■	■	■	–	–	■
Digital clock	■	■	■	■	■	■	■	■
Electrical system prepared for charge socket for torch in glove compartment	■	■	■	■	■	■	■	■
Follow-me-Home function	■	■	■	■	■	■	■	■
Foot mats in velour	□	□	□	□	□	□	□	□
Glass sliding/vent roof, electric	□	□	□	□	□	□	□	□
Glove compartment illuminated and lockable	■	■	■	■	■	■	■	■
Headlight range control, electrical	■	■	■	■	■	■	■	■
Headrests at the front, adjustable for height and angle	■	■	■	■	■	■	■	■
Headrests at the rear, with manual height adjustment	■	■	■	■	■	■	■	■
HiFi loudspeaker system	□	□	□	□	□	□	□	□
HiFi loudspeaker system harman/kardon	□	□	□	□	□	□	□	□
Illumination of centre console from above	■	■	■	■	■	■	■	■
Interior mirror, anti-dazzle	■	■	■	■	■	■	■	■
Interior mirror with automatic anti-dazzle function	–	–	□	□	□	–	–	□
Interior mirror with automatic anti-dazzle function, incl interior light package	□	□	–	–	–	□	□	–
“LIGHTS ON?” warning	■	■	■	■	■	■	■	■
Luggage compartment with all-round textile lining	■	■	■	■	■	■	■	■
Luggage net on front-seat backrests	–	–	■	■	■	–	–	■

¹ Only in conjunction with ski-bag or storage package (both optional equipment).

Interior features	316i	318i	320i	325i	330i	318d	320d	330d
Lumbar support for driver and front passenger, electrically adjustable	□	□	□	□	□	□	□	□
Navigation system* with 16 : 9 on-board monitor	□	□	□	□	□	□	□	□
Non-smoker package	■	■	■	■	■	■	■	■
On-board computer	□	□	■	■	■	□	□	■
Outside temperature display	□	□	■	■	■	□	□	■
Preparation for car telephone, incl group aerial	□	□	□	□	□	□	□	□
Radio navigator*, incl BMW Business radio, LC display integrated in radio control console	□	□	□	□	□	□	□	□
Radios, range of	□	□	□	□	□	□	□	□
Reading lights, switchable, at the rear	■	■	■	■	■	■	■	■
Rev counter with Energy Control, fuel gauge, coolant thermometer, LC display for mileage and trip counter	■	■	■	■	■	■	■	■
Roof lining in anthracite	□	□	□	□	□	□	□	□
Seats/seat comfort:								
– Standard seats with Jacquard cloth upholstery	■	■	■	■	■	■	■	■
– Seat heating for driver and front passenger	□	□	□	□	□	□	□	□
– Electric seat adjustment for driver and front passenger, with memory function for driver's seat and exterior mirrors	□	□	□	□	□	□	□	□
– Sports seats for driver and front passenger	□	□	□	□	□	□	□	□
Service Interval Indicator showing remaining mileage in display	■	■	■	■	■	■	■	■
Ski-bag	□	□	□	□	□	□	□	□
Smoker package (at no extra cost)	□	□	□	□	□	□	□	□
Steering wheels:								
– Standard steering wheel, 4-spoke	■	■	■	■	–	■	■	–
– Leather steering wheel with four spokes incl shift lever knob or selector lever handle in leather or wood	□	□	□	□	■	□	□	■
– Leather sports steering wheel with three spokes, steering wheel bracket matching the interior trim colour, incl shift lever knob or selector lever handle in leather or wood	□	□	□	□	□	□	□	□
– Multifunction buttons for steering wheel, for cruise control and for remote control of radio/telephone	□	□	□	□	□	□	□	□
Storage package	□	□	□	□	□	□	□	□
Storage space in front and rear multi-function consoles, storage compartment and front doors; extra storage space with non-smoker package	■	■	■	■	■	■	■	■
Through-loading system with asymmetric rear seat subdivision (2 : 1)	□	□	□	□	□	□	□	□
Tools stored in a box underneath the luggage compartment lid	■	■	■	■	■	■	■	■
Twin-tone horn	■	■	■	■	■	■	■	■
Top Comfort Package: bi-xenon headlights, lumbar support, multifunction buttons for steering wheel, foglamps, rain sensor, headlight washing system, seat heating for driver and front passenger	□	□	□	□	□	□	□	□

*Navigation system not available in all countries.

Interior features	316i	318i	320i	325i	330i	318d	320d	330d
TVfunction for navigation system	□	□	□	□	□	□	□	□
Upholstery:								
– Jacquard cloth	■	■	■	■	■	■	■	■
– Tex cloth 2000	□	□	□	□	□	□	□	□
– Bianco Nero design	□	□	□	□	□	□	□	□
– Gran Turismo design	□	□	□	□	□	□	□	□
– Maglia design	□	□	□	□	□	□	□	□
– Exclusive Nappa leather	□	□	□	□	□	□	□	□
– Montana leather	□	□	□	□	□	□	□	□
Vanity mirrors with slide covers for driver and front passenger	■	■	■	■	■	■	■	■
Velour carpeting , driver foot support integrated in side panel	■	■	■	■	■	■	■	■
Voice control	□	□	□	□	□	□	□	□
Warning triangle and first-aid kit	■	■	■	■	■	■	■	■
Window lifts electric at the front, with open-close fingertip control, trap release and comfort closing function	■	■	■	■	■	■	■	■
Window lifts electric at the rear, with open-close fingertip control, trap release and comfort closing function	□	□	□	□	■	□	□	■

Exterior features	316i	318i	320i	325i	330i	318d	320d	330d
Bumpers and exterior mirrors in body colour	■	■	■	■	■	■	■	■
Door cutouts in plastic	■	■	–	–	–	■	■	–
Door cutouts with chrome inserts	–	–	■	■	■	–	–	■
Doorsill cover with chrome inserts	–	–	■	■	■	–	–	■
Engine compartment and luggage compartment lids supported by gas pressure springs	■	■	■	■	■	■	■	■
Exterior mirrors , aspheric, blue-tinted, electrically adjustable	■	■	–	–	–	■	■	–
Exterior mirrors , aspheric, blue-tinted, electrically adjustable, heated (incl heated screenwasher nozzles)	–	–	■	■	■	–	–	■
Exterior mirror package incl fold-in function, heated exterior mirror and screenwasher nozzles	□	□	□	□	□	□	□	□
Foglamp surrounds , titanium-coloured ¹	–	–	–	–	■	–	–	–
Front ornamental grille with titanium-colour vertical slats and chrome surround, air intake in bumper finished in titanium	–	–	–	–	■	–	–	–
Group aerial in body colour	□	□	□	□	□	□	□	□
Headlamp surrounds , titanium-coloured ¹	–	–	–	–	■	–	–	–
Heat-insulating glass all-round, green, with laminated windscreen	■	■	■	■	■	■	■	■
Metallic paintwork	□	□	□	□	□	□	□	□
Model designation , dropped (no additional cost)	□	□	□	□	□	□	□	□
M sports package II	□	□	□	□	□	□	□	□
Protruding door handles in body colour	□	□	■	■	■	□	□	■
Protruding door handles in black	■	■	–	–	–	■	■	–
Remote control , key with automatically recharging battery	■	■	■	■	■	■	■	■
Rustproofing , all-round, with partial hot galvanisation, phosphating and cathodic dip bath, preservation of hollow cavities, underfloor protection	■	■	■	■	■	■	■	■
Screenwasher nozzles , heated	–	–	■	■	■	–	–	■
Trailer towing bar with removable ball head	□	□	□	□	□	□	□	□
Wheels:								
– BMW steel wheel with full wheel cover in aluminium look, 15-inch	■	–	–	–	–	■	–	–
– BMW steel wheel with full wheel cover in aluminium look, 16-inch	–	■	–	–	–	–	■	–
– BMW light-alloy wheels double-spoke styling 53, 15-inch	□	–	–	–	–	□	–	–
– BMW light-alloy wheels ellipsoid styling 46, 15-inch	□	–	–	–	–	□	–	–
– BMW light-alloy wheels ellipsoid styling 46, 16-inch	–	–	■	■	–	–	–	–
– BMW light-alloy wheels star-spoke styling 45, 16-inch	□	□	□	□	–	□	□	–
– BMW light-alloy wheels V-spoke styling 54, 16-inch	□	□	□	□	–	□	□	–
– BMW light-alloy wheels cross-spoke styling 42, 16-inch	□	□	□	□	–	□	□	–
– BMW light-alloy wheels star-spoke styling 43, 16-inch	□	□	□	□	–	□	□	–
– BMW light-alloy wheels star-spoke styling 96, 17-inch	□	□	□	□	□	□	□	□
– BMW light-alloy wheels radial-spoke styling 73, 17-inch	□	□	□	□	–	□	□	–
– BMW light-alloy wheels double-spoke styling 68M, 17-inch	□	□	□	□	□	□	□	□
– BMW light-alloy wheels star-spoke styling 44, 17-inch	□	□	□	□	■	□	□	■
– BMW light-alloy wheels V-spoke styling 72M, 18-inch	□	□	□	□	□	□	□	□
Wheel arches , front, with plastic inserts	■	■	■	■	■	■	■	■
Windscreen with green stripe	□	□	□	□	□	□	□	□

¹ Not in conjunction with sports package.

Weight		316i	318i	320i	325i	330i	318d	320d	330d
Unladen, EU ¹	kg	1385 [1415]	1395 [1425]	1465 [1500]	1485 [1520]	1505 [1540]	1470	1490 [1505]	1595 [1610]
Max. permissible	kg	1810 [1840]	1820 [1850]	1890 [1925]	1910 [1945]	1930 [1965]	1895	1915 [1930]	2020 [2035]
Permitted load ¹	kg	500	500	500	500	500	500	500	500
Permitted axle load, front/rear	kg	880/1005	890/1005	920/1045	930/1050	935/1075	905/1035	915/1060	1000/1100
Permitted roof load	kg	75	75	75	75	75	75	75	75
Permitted trailer load, unbraked ²	kg	670	680	720	720	730	720	720	750
Permitted trailer load, braked, max. 12% gradient ²	kg	1250 [1400]	1400 [1500]	1600	1600	1700	1600	1600	1800
Permitted trailer load, braked, max. 8% gradient ²	kg	1600	1600	1700	1700	1800	1700	1800	1800
Permitted towbar download	kg	75	75	75	75	75	75	75	75

Engine^{3,4}		316i	318i	320i	325i	330i	318d	320d	330d
Cylinders/valves		4/4	4/4	6/4	6/4	6/4	4/4	4/4	6/4
Capacity	cc	1796	1995	2171	2494	2979	1951	1955	2926
Stroke/bore	mm	81.0/84.0	90.0/84.0	72.0/80.0	75.0/84.0	89.6/84.0	88.0/84.0	90.0/84.0	88.0/84.0
Max. output	kW/bhp/rpm	85/115/5500	105/143/6000	125/170/6100	141/192/6000	170/231/5900	85/115/4000	110/150/4000	135/184/4000
Max. torque	Nm/lb-ft/rpm	175/129/3750	200/148/3750	210/155/3500	245/181/3500	300/221/3500	265/195/1750	330/243/2000	390/288/1750
Compression ratio	:1	10.5	10.2	10.8	10.5	10.2	19.0	17.0	18.0

Transmission		316i	318i	320i	325i	330i	318d	320d	330d
Standard transmission ratios	I/II :1	4.23/2.52	4.23/2.52	4.23/2.52	4.23/2.52	4.21/2.49	5.09/2.80	5.24/2.92	5.24/2.92
	III/IV :1	1.66/1.22	1.66/1.22	1.66/1.22	1.66/1.22	1.66/1.24	1.76/1.25	1.82/1.27	1.82/1.27
	V/R :1	1.00/4.04	1.00/4.04	1.00/4.04	1.00/4.04	1.00/3.85	1.00/4.71	1.00/4.72	1.00/4.72
Final drive ratio	:1	3.38 [3.73]	3.38 [3.45]	3.38 [3.38]	3.15 [3.23]	2.93 [3.38]	2.47	2.35 [3.07]	2.28 [2.81]
Final drive ratio (all-wheel drive)	:1	—	—	—	3.23 [3.23]	3.07 [315]	—	—	2.35 [2.93]

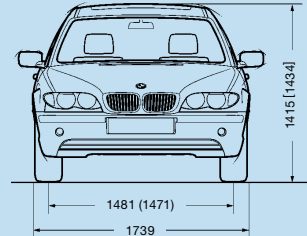
Performance		316i	318i	320i	325i	330i	318d	320d	330d
Top speed	km/h	206 [200]	218 [214]	226 [223]	240 [237]	250 ⁵ [247]	204	216 [213]	227 [227]
Top speed (all-wheel drive)	km/h	—	—	—	234 [231]	247 [242]	—	—	224 [224]
Acceleration 0–100 km/h	sec	10.9 [11.9]	9.3 [10.2]	8.2 [9.3]	7.2 [8.3]	6.5 [7.0]	10.7	8.9 [9.1]	7.8 [8.2]
Acceleration 0–100 km/h (all-wheel drive)	sec	—	—	—	7.4 [8.5]	6.6 [7.4]	—	—	8.5 [8.8]
Acceleration 80–120 km/h in 4th gear (with standard transmission)	sec	11.1	9.2	8.6	7.7	6.9	9.3	7.5	6.9
Acceleration 80–120 km/h in 4th gear (all-wheel drive with standard transmission)	sec	—	—	—	8.1	7.0	—	—	7.2

Fuel consumption^{3,4}		316i	318i	320i	325i	330i	318d	320d	330d
Urban	ltr/100 km	9.9 [10.9]	10.2 [11.2]	12.2 [13.1]	12.8 [13.5]	12.8 [14.0]	7.4	7.6 [9.7]	9.2 [11.1]
Urban (all-wheel drive)	ltr/100 km	—	—	—	13.2 [14.2]	13.3 [14.4]	—	—	10.1 [12.0]

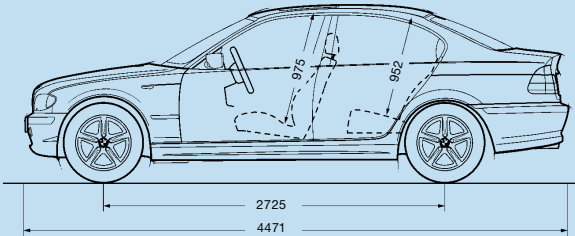
Fuel consumption^{3,4}		316i	318i	320i	325i	330i	318d	320d	330d
Extra-urban	ltr/100 km	5.5 [6.4]	5.5 [6.3]	6.9 [7.3]	6.9 [7.2]	6.9 [7.0]	4.5	4.4 [5.6]	5.3 [6.2]
Extra-urban (all-wheel drive)	ltr/100 km	—	—	—	7.5 [8.0]	7.4 [7.8]	—	—	6.2 [6.8]
Composite	ltr/100 km	7.1 [8.0]	7.2 [8.1]	8.9 [9.4]	9.0 [9.5]	9.1 [9.6]	5.6	5.5 [6.9]	6.7 [8.0]
Composite (all-wheel drive)	ltr/100 km	—	—	—	9.6 [10.3]	9.6 [10.3]	—	—	7.6 [8.7]
CO ₂ emissions	g/km	172 [194]	175 [196]	213 [226]	217 [229]	218 [230]	149	148 [185]	178 [213]
CO ₂ emissions (all-wheel drive)	g/km	—	—	—	230 [247]	229 [246]	—	—	202 [232]
Tank capacity, approx.	ltr	63	63	63	63	63	63	63	63

Wheels		316i	318i	320i	325i	330i	318d	320d	330d
Tyre dimensions		195/65 R 15 H	205/55 R 16 V	205/55 R 16 V	205/55 R 16 W	225/45 R 17 W	195/65 R 15 H	205/55 R 16 V	225/45 R 17 W
Wheel dimensions		6.5 J x 15	7 J x 16	7 J x 16	7 J x 16	8 J x 17	6.5 J x 15	7 J x 16	8 J x 17
Material		Steel wheel	Steel wheel	Light alloy	Light alloy	Light alloy	Steel wheel	Steel wheel	Light alloy

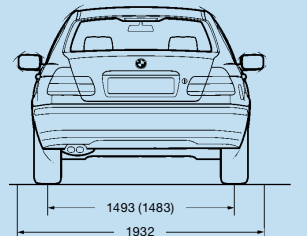
Electrical system		316i	318i	320i	325i	330i	318d	320d	330d
Battery capacity	Ah	55	55	70	70	70	80	80	95
Alternator output	A	120	120	90 [120]	90 [120]	90 [120]	150	150	150
	W	1680	1680	1260 [1680]	1260 [1680]	1260 [1680]	2100	2100	2100



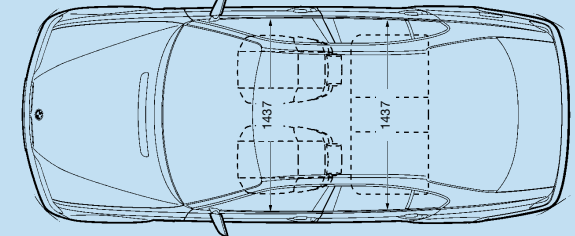
1481 (1471)
1739
1415 (1434)



2725
4471



1493 (1483)
1932



1437
1437

All dimensions in millimetres. Values in () apply to 318i, 320i, 325i, 330i and 330d. Values in [] apply to all-wheel drive. Luggage compartment capacity 440 litres (15.5 cu ft) (to VDA standard).

¹ The figure quoted includes a 90% tank filling, 68 kg for the driver and 7 kg for luggage. Unladen weight applies to vehicles with standard equipment. Optional equipment may increase this figure.
² The overall weight of the trailer may not exceed the maximum permissible trailer load plus the maximum permissible towbar download.
³ The 4-cylinder petrol engines are designed for RON 95 fuel, the 6-cylinder petrol engines, for RON 98 fuel. The engines may be run on RON 91 fuel with a decrease in power and an increase in fuel consumption.
⁴ All BMW 3 Series six-cylinder petrol engines meet the

EU3/D4 emissions standard. The four-cylinder petrol engines meet the EU4 emissions standard. The diesel engines meet the EU3 standard. Fuel consumption is determined in accordance with the ECE driving cycle made up of approximately one third urban traffic and two thirds extra-urban driving (based on the distance covered). CO₂ emissions are measured in addition to fuel consumption as such.
⁵ Electronically limited.
 Values in [] apply to vehicles with five-speed EH automatic transmission.